

1" on center Mini PVC slatwall

MegaWall Mini 1" on center plastic slatwall is a great alternative to MDF slatwall. For installation directly onto studs review following instructions.

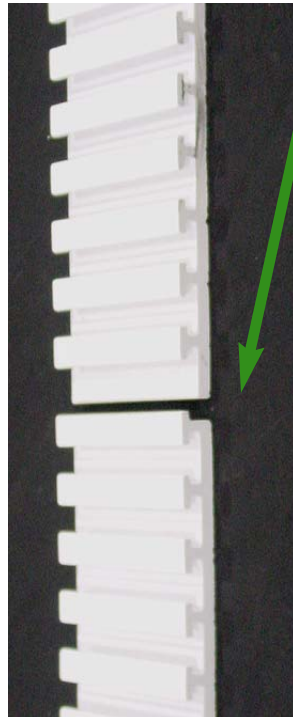
1. Start at the bottom of the installation as seen in figure A. Using drywall screws, screw into each stud. Use screws on each stud and between slats.
2. Once 1st slat profile is secure place second profile on top and secure as shown in figure B.
3. Continue process until finished. Screw on each slat and on each stud 16" on center.



Profile Top



Profile interlock



Profile Bottom