

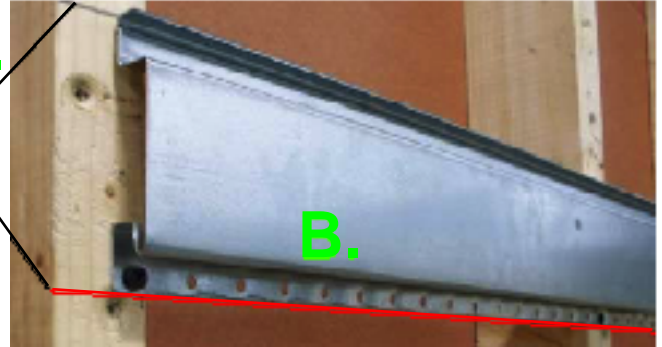
Easy installation. Starting from the top Megawall uses individual profiles that interlock and screw to the wall to create slatwall panels for perimeter walls.

- A.** Measure 4" down from the top of desired slatwall panel. Laser or snap a level line.
- B.** Place first profile above the line and screw into the stud 16" on center.
- C.** Insert next profile into bottom of first profile. Screw in 16" on center. Repeat to bottom.

MegaWall Recommends using anchor bolt when applying to substrate if a stud is not available at the end of profile.

A.

4"

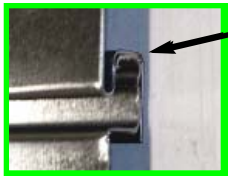


B.

C.

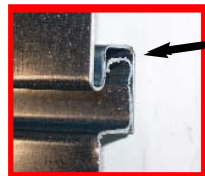


CAUTION: Improper installation will cause accessory problems and wall to be unlevel.



No Gap

Correct Interlock



Gap

Incorrect Interlock

TRIM

Top Trim is a 90 degree trim piece with .75" each side x 8' long. Install using self tapping screws at top and bottom. Construction adhesive along inside for additional adhesion optional.



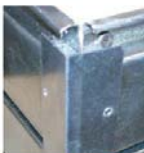
Bottom Trim is a 90 degree trim piece with .75" each side x 8' long. Install using self tapping screws at top and bottom. Construction adhesive along inside for additional adhesion optional.



End Trim is a 90 degree trim piece with .75" each side x 8' long. Install using self tapping screws at top and bottom. Construction adhesive along inside for additional adhesion optional.



Outside Corner Trim is a 90 degree trim piece with 1.25" each side x 8' long. Install using self tapping screws at top and bottom. Construction adhesive along inside for additional adhesion optional.



Inside Corner Trim is a 90 degree trim piece with 1.25" each side x 8' long. Install using self tapping screws at top and bottom. Construction adhesive along inside for additional adhesion optional.

