

ALUMINUM SLATWALL SYSTEMS

Prices are for 6" high x 96" long aluminum extrusions.



1" ALUMINUM MEGAWALL



Flat Back A10-1S-96
raw mill
anodized/powdercoat



Hidden Fastener AHF-1-96
raw mill
anodized/powdercoat



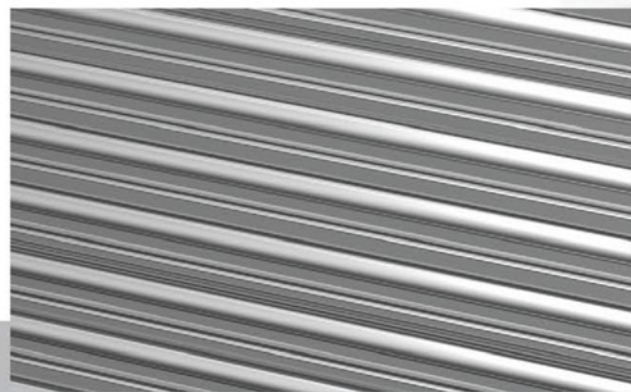
Double-Sided A10-2S-96
raw mill
anodized/powdercoat



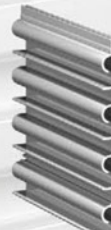
1-3/8" ALUMINUM MEGAWALL



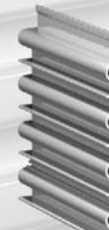
Flat Back A138-1S-96
raw mill
anodized/powdercoat



1-1/2" ALUMINUM MEGAWALL



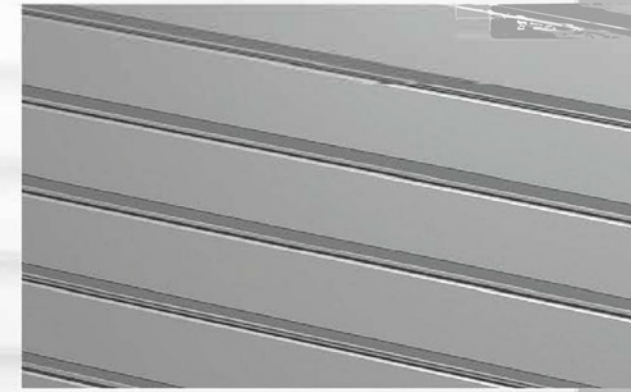
Flat Back A15-1S-96
raw mill
anodized/powdercoat



Hidden Fastener AHF-15-96
raw mill
anodized/powdercoat



Double-Sided A15-2S-96
raw mill
anodized/powdercoat



2" ALUMINUM MEGAWALL



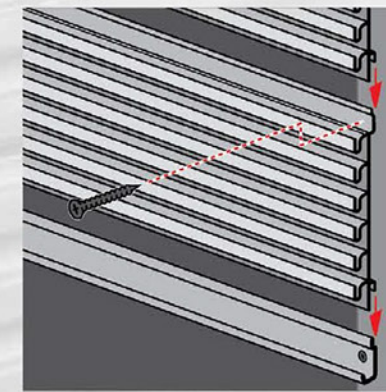
Double-Sided A20-2S-96
raw mill
anodized/powdercoat



3" ALUMINUM MEGAWALL

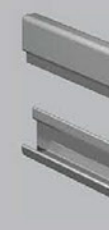


Hidden Fastener AHF-3-96
raw mill
anodized/powdercoat



6" High sections interlock together.

J-CAP - For hidden fastener installations



Serves for both top & bottom trim. 96" long. AHF-JC-96
raw mill
anodized/powdercoat

- 50%+ Recycled Content
- LEED Certified
- Hidden fasteners available (1", 1-1/2", 3")
- Seamless up to 8' sections.
- Meets fire codes.
- Durable, easy to clean, no dust or formaldehyde issues.
- Stronger than conventional MDF with aluminum inserts.
- Matching edge and corner trims available.
- Custom lengths and color matching available.

PATENT NUMBER 6,349,507

STANDARD COLORS - Custom powdercoat finishes are available.



000 RAW MILL

111 BLACK

800 CLEAR ANODIZE

112 WHITE

MEGAWALL
SLATWALL SYSTEMS
800-948-2736 www.megawall.com

Prices are for 6" high x 96" long aluminum extrusions.

MEGAWALL
SLATWALL SYSTEMS
800-948-2736 www.megawall.com

ALUMINUM SLATWALL SYSTEMS